



September 2016

Volume 6, Issue 1

Chairman's Message

This is the newsletter of the **Elham** Historical Society, but articles on the excavations at Lyminge, and on the 17 bus route which links us to Canterbury and Folkestone and the other communities of the Valley, remind us that we cannot study our community in isolation.

St Martin's Church at Acrise has only recently become part of the Elham church group, but our trip up the hill in August reflected that the "big house" there always had a large influence on Elham.

I hope to pursue that theme next year with a visit to St Mary Magdalene at Denton. Henry Oxenden, who lived in the 17th century at Great Maydeacon (strangely in Barham parish), wrote many letters which are even more relevant to Elham than those of Jane Papillon from Acrise Place.

DMB

Forthcoming Events

Friday September 30th - Elham Village Hall – 8.00 pm

Dave Humphries will present a collection of photos of Canterbury before the devastating bombing. Come and see what's changed (for better or worse) and test your memories.

Friday October 7th - Elham Village Hall – 8.00 pm

Dr John Bulaitis – Senior Lecturer at Canterbury Christchurch University will introduce us to the Tithe Wars and how they effected the Elham Valley.

Friday November 11th - Elham Village Hall – 8.00 pm

Local author, Dennis Pepper, will talk to us about St. Botolph and his links with Folkestone's St. Eynswythe.

Friday December 1st - The Abbot's Fireside – 7.30 for 8.00 pm

A social evening to welcome in the Christmas season and maybe that old rogue Hezekiah Tumbleweed can be persuaded to put in an appearance! Full details on Page 4.

Friday December 9th - Elham Village Hall – 8.00 pm

Daphne and Andrew Joynes will introduce us to their ancestor, Admiral Parker, known as Sheppey's Admiral.

Booking arrangements:

All Friday evening talks are at the Village Hall in Elham, starting at 8.00 p.m. and places can be reserved by contacting the Secretary on 01303 840336 or emailing alsladden@btinternet.com. Members £3.00 and Non-Members £5.00.

Visits that are arranged by Real Socialising can be booked by telephoning Viv Kenny on 0777 3946828 (Let her know you are an EHS Member) or emailing info@realsocialising.co.uk.

Lyminge Archaeological Project

It's been a while since we had an update on the dig at Lyminge, which has now finished after seven years, but I've been checking out their blog (blogs.reading.ac.uk/lyminge) and see that there is some interesting news.

Most importantly (!) they report on the Lyminge Tapestry, now hanging in the Tayne Centre, which was produced over the winter months by the team of local volunteers who had helped with finds washing since the first large excavations in 2008.

As you'll see from the picture below, it contains images of the halls and sunken-featured buildings that were excavated on Tayne Field since 2012 as well as copies of the artefacts, animals and activities that would have taken place there.

Recent and forthcoming publications relating to the dig are also mentioned – a paper on the remarkable Anglo-Saxon plough coulter from the 2010 excavations published in “*Antiquity*” and the proceedings of the Lyminge Project Conference held in Canterbury in 2015 which will be published in the series ‘Anglo-Saxon Studies in Archaeology and History.’ (See the blog for full details).

Recently, the project Director, Gabor Thomas, knowing the enthusiasm of this group of volunteers, kindly brought some of the star finds which have now been brilliantly conserved, back to Lyminge to show us. You can see these very clearly on the blog – both ‘before’ and ‘after’ – and I can assure you that holding an artefact that you last saw discoloured by rust and covered in mud, that now looks newly made, is an awesome experience. I urge you to check out the blog....it's all part of our local history!



The stunning Lyminge Tapestry commemorating the excavation and the archaeology of Lyminge

An illustrated 32 page booklet entitled ‘**Volunteering at the Lyminge Excavations**’ has been produced and is available at a cost of £6.00.

If you would like a copy please contact John Piddock on 0782 1916655

Out and About

Some up-coming events you may find interesting:

Saturday 10th September Early Medieval Kent, 800 – 1220

Old Sessions House, Canterbury Christ Church University, Canterbury Campus.

This is a joint day conference run by Canterbury Christ Church University, Centre for Kent History and Heritage and the Friends of Canterbury Archaeological Trust.

The introductions starts at 10.00 am and there are 4 sessions during the day:

Raiders, Invaders and Settlers, Aspects of Landscape, The Church and The city of Canterbury. Tea and coffee will be served during morning and afternoon breaks and the day finishes at 4.30 pm.

Tickets: £10 per person. To book visit: www.canterbury.ac.uk/medieval-kent or phone 01227 782994 (office hours).

Wednesday 22st September - Wartime Farm Revisited

Old Sessions House, Canterbury Christ Church University, Canterbury Campus.

This is the Fifth Nightingale Memorial Lecture run by the centre for Kent History and Heritage and Agricultural Museum, Brook given by Professor John Martin (De Montfort University).

Using the highly successful TV series *The Wartime Farm*, Professor Martin will explore the effectiveness of Britain's attempts to feed itself during the 2nd W.W., when the country was forced to endure an unprecedented decline in food imports. His presentation will also examine the conventional wisdom about the success of the state-directed food production campaign, the impact of wartime controls and rationing, and the vitally important role the rural community played in ensuring Britain's survival.

7.00 p.m. (Wine reception from 6.30 pm) All welcome and entry is free (voluntary retiring collection).

Now until 29th October 2016

There is a free exhibition at the Kent History and Library Centre, Maidstone, ME14 1LQ – *'Hopping Down in Kent – a year in the life of a Hop Garden'*. The exhibition runs until 29th October and focuses on annual activities within a traditional hop garden from planting to harvesting. The display features original archives on hopping as well as beer brewing, together with a bespoke film made by Screen Archive South East from their film archives

4th October – Tayne Centre, Lyminge – 7.30 pm

For anyone who missed Anne Beecham's talk to us on *Neanderthals in the Elham Valley* she will be presenting this to the Lyminge Historical Society.



Christmas Social Event

Thursday, 1st December, 7.30 p.m.

The Abbott's Fireside

This year's social evening will be held at the Abbot's Fireside and we hope Hezekiah Tumbleweed will be able to put in an appearance again.

As before, you will need to book direct with the restaurant and leave a £5.00 deposit.

Costs will be £20.00 for 2 courses and £25.00 for 3 courses.

Numbers will be limited to 35 so it's important to get your booking in early.

Menu

To Start:

Roast vine tomato soup with Kentish Asparagus tips finished with crème fraîche.
Dargate Dumpy cheese baked in filo pastry served with sour dough bread sticks, pan roasted winter berries scented with rosemary.

Whiskey and coriander cured salmon with pickled mixed vegetable and wasabi mayonnaise.

Main Course:

Traditional roast turkey, chickpea and chestnut stuffing, chipolata and bacon roll, cranberry and clementine sauce, honeyed parsnips, cumin roast sprouts, roast potatoes and port gravy.
Tenderloin of pork, creamed leeks, pulled pork croquette, roast carrot and Kentish Henderson's cider veloute.

Fillet of sea bass, crushed potatoes flecked with Cornish crab, pan roasted broccoli stalks and brown shrimp butter sauce.
Aubergine cannelloni, ricotta, spinach roast vegetables, char-grilled cucumber served with tomato confit.

To follow:

Traditional Christmas Pudding with brandy sauce and mini mince pies.

Festive berry delice with Kentish clotted cream.

Kentish cheese with grapes, celery, chutney and charcoal crackers.

Coffee

OUR VISIT TO BROOME PARK



The cream tea was an elegant affair but an extra tea bag or two would have been appreciated!

A guided tour of Broome Park – 24th March. A chilly day but our guide gave us a fascinating tour of the house and we came away with a deeper insight into the character of Lord Kitchener!

OUR VISIT TO SAMPHIRE HOE



It turned out to be a very blustery day when we met at Samphire Hoe for our guided walk, a talk and refreshments on 18th May. Paul Holt was our guide and his enthusiasm for this little patch of new land, created from the waste dug from the Channel Tunnel workings, was inspiring. Few of us were previously aware of the history of the people who lived under Shakespeare Cliff, but a film at the start of the tour put us all in the picture and a very useful booklet was purchased for the archives which had some excellent pictures of life as it had been lived there. The people must have been very hardy, climbing up and down the hill to go to school or work or shopping in Dover on a daily basis. Although it was cold we had an excellent walk as we were shown the natural history of the area, but were glad to take shelter back in our cars at the end of the tour.



The first Elham Valley East Kent bus service photographed outside the Abbot's Fireside in May 1919
Richard Wallace has published a book "East Kent Road Car Company Ltd" which includes a photo of a Leyland PDI taken at the bus stop outside the Rose & Crown in the late 1940s early 1950s.



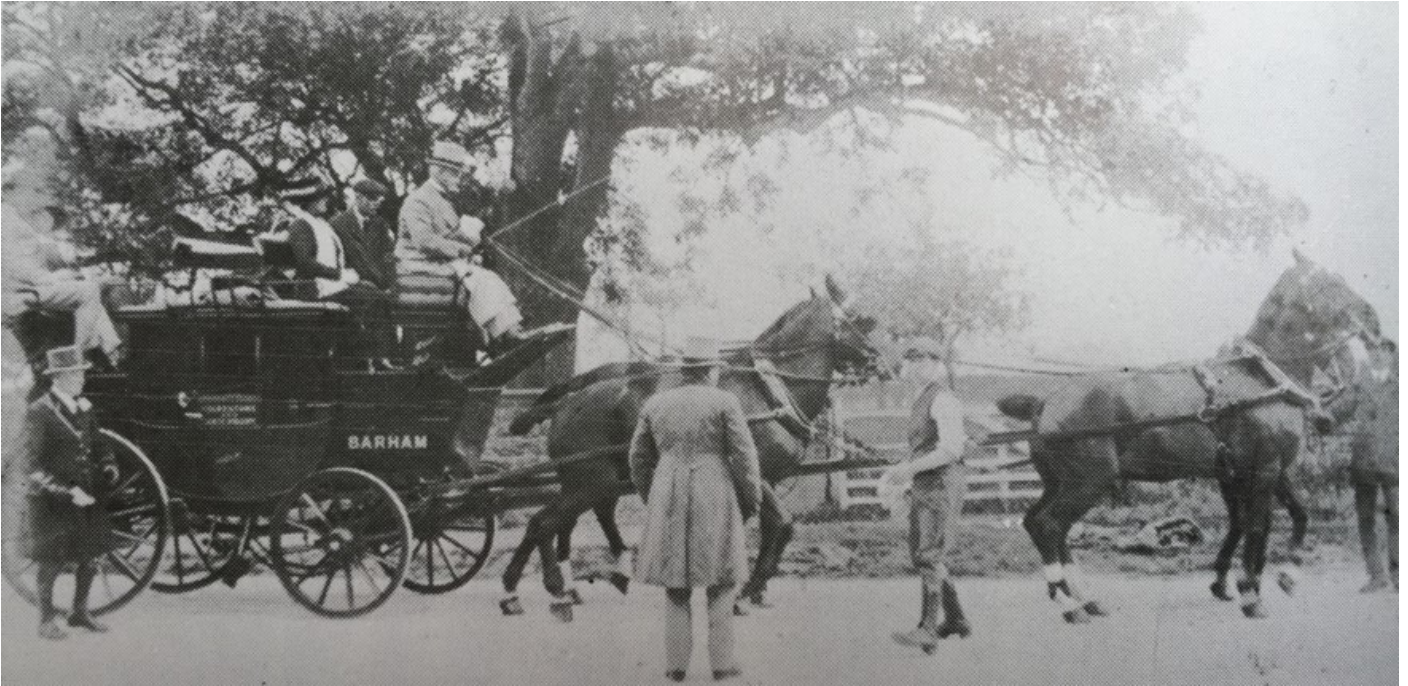


This is a very interesting photo, as it shows the penultimate buses of two different types of bus, at the bus stop at the Rose & Crown. The AEC on the left appears to be almost new, suggesting the photo was taken about late 1967 early 68. The Guy Arab on the right was the final development of the type. This one has a park royal 56 seat body and was in the last weeks of operation before being taken out of service. MFN 887 and 888 are preserved; 888 is in the Stagecoach heritage fleet, and is looked after by the Maidstone & District and East Kent Bus club. The Guys were a standard buy for East Kent from the end of the war until Guy was taken over by Leyland. The AEC on the left MFN 949F is a regent MK V: the final development of this model with 77 seat Park Royal body and a nine litre engine. East Kent started to buy these from when the GUYs went out of production. Buses 949 and 950 the last member of this type are preserved. EHS member Mick Cook took his Public Service Vehicle (PSV) Licence Test driving 949.



The AECs in their final years at Cheriton Garage in 1986

Before the introduction of the bus service in 1919 businesses and residents of the Elham Valley had to rely on either the railway or carters to carry packages or themselves, alternatively they could have walked or used their own horse/carriage.



Elham Valley Stagecoach in 1910

With grateful thanks to EHS member Michael Cook for his photographs and detailed bus information. It's always good to receive articles from our members - *Ed*

Canterbury Archaeological Trust Course Brochure for 2016/17

The new CAT brochure for the forthcoming year has been published and has some extremely interesting courses. There is something for everyone and their new Tuesday evening courses look particularly good. Entitled "*Canterbury's tale: - the story of a city from the Ice Age to the Tudors,*" the first evening is on 27th September 2016 and covers 'Canterbury before Canterbury: from the Ice Age to the first farmers.' Week by week it will take you through the Iron Age, the Roman settlement, the coming of St Augustine, Anglo-Saxon and Norman Canterbury, the pilgrims, the plague and the revolts. It runs for 10 weeks and booking can be done through their website:

http://www.canterburytrust.co.uk/community_archaeology/archaeology-courses/evening-course/

or http://www.canterburytrust.co.uk/community_archaeology/archaeology-courses/day-courses/ for the day courses.

One can cherry pick the courses that most appeal to you, it is not necessary to book the whole series.

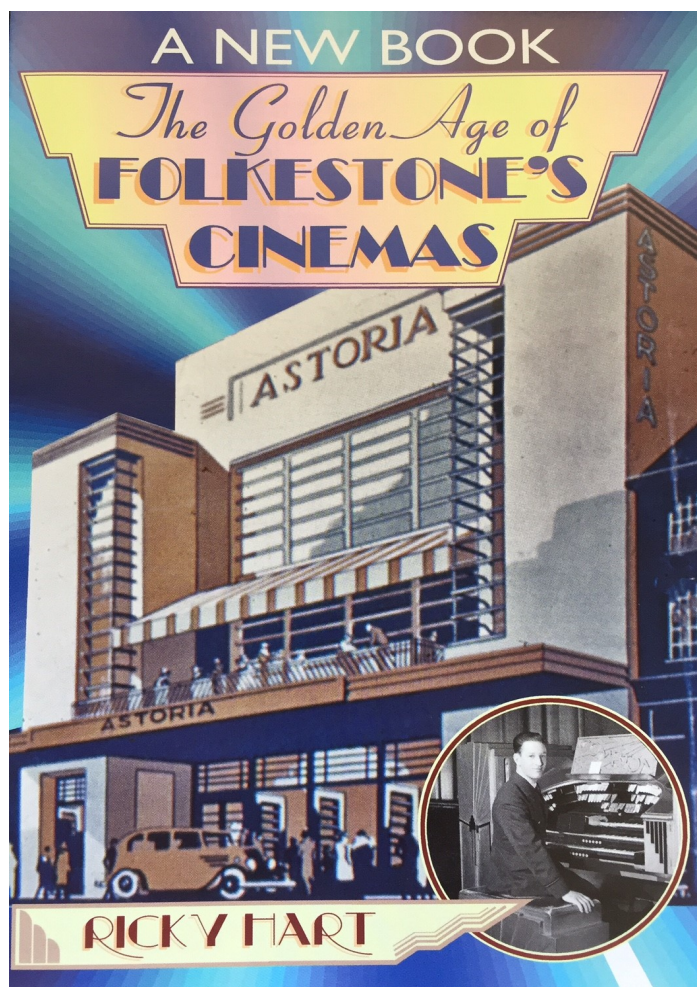
News from Folkestone Research and Archaeology Group - The Roman Villa on Folkestone's East Wear Bay

We've received news that the East Wear Bay 2016 dig has now been completed. FRAG's Secretary says that although the site was the same as the one they dug last year a few surprises were awaiting them this year, adding to the complexity of the site. Apparently, the last feature was uncovered on Saturday, 27th August. Rumour has it that it was early Iron Age Pottery! It seems that the site will now be backfilled and in July 2017 another section will be opened towards the Roman Villa site to discover more of the local archaeology before it falls over the cliff and disappears without being recorded. If you would be interested in finding out more, their meetings will now resume on the first Friday of each month at 6.30 p.m. in the Folkestone People's History Centre Office, Millbay, off Tontine Street, or call Kate Holtham on 07771630283 for more information.

New Books

To mark the launch of the latest and final volume in the Kent History Project series, *Early Medieval Kent, 800-1220*, edited by Sheila Sweetinburgh and is published by Boydell and Brewer. This volume is available to members at the reduced price of £37.50 which represents a 25% discount on the RRP. This offer ends on 1st December 2016.

If you are interested in obtaining a copy, you can contact Sarah Stanley the Archives and Local History Manager, by post at Kent History and Library Centre, James Whatman Way, MAIDSTONE ME14 1LQ; by email sarah.stanley@kent.gov.uk; or by telephone 03000 414943.



SAVOY CINEMA FOLKESTONE
ASTORIA



In 1940 the Astoria became the Odeon and throughout the war remained one of Folkestone's most popular venues for servicemen.

All four cinemas in the town survived into the 1960s, competing with the age of television and dwindling audiences. The Playhouse was first to close, whilst the Savoy eventually went over to bingo. The Central was converted into three separate cinemas, but the greatest loss was arguably the Odeon which ceased in 1974.

ODEON FOLKESTONE
Happier days at the Odeon

Author Ricky Hart was born in Folkestone and from an early age developed a keen passion for the 'silver screen' and particularly the cinema organs at these venues. Usherettes would find him at the front seat, not to watch the film, but the organist's performance where young Ricky would remain - even for the repeat show!

In 1945, at the age of 20 and while still serving in the RAF, Ricky realized his dream when given the opportunity by Odeon management to play at a Boxing Night performance. Later on, his passion for the instrument led him to pursue his musical hobby whereupon he built his own electronic organ at home.

An extremely clever and talented man, his ambition was further ignited when the cinema organs at Folkestone's Playhouse, Savoy and Pleasure Gardens Theatre were being destroyed by the demolition gangs. Displaying heroic effort and sheer determination, Ricky salvaged all he could, so that friends and organ enthusiasts could still enjoy 'Music from the Age of Romance'.

His lavishly-illustrated book *The Golden Age of Folkestone's Cinemas* chronicles the development of the town's palaces of entertainment from their inception, through to their glory days and on to their eventual demise. With unique insight, aided by his own personal memories, Ricky's passion for the grand age of these 'theatres of dreams' shines through his captivating and well-written account. Tempered with his characteristically good humour, the book is a worthy addition to the history of this fascinating seaside resort.

Ricky at 'The Mighty Standaart Organ' he built all by himself from salvaged components



Ricky gets to play the Odeon's Compton organ one last time



PLAYHOUSE
Super Cinema, Cafe and Garage
QUEENSLAND STREET FOLKESTONE TEL 354

CENTRAL SUPER CINEMA



The final days of the Odeon come to an end after 40 years of entertainment



The Golden Age of Folkestone's Cinemas
 ISBN 978 0 9510454 3 5
 will be available from local bookshops and outlets
 price £14.95 or by post from the publishers.
 Further details may be obtained through this website -
<http://www.brianhartsrailways.com>

A new book by Brian Hart, packed with lots of interesting pictures and information, originally researched by his father. Such was his passion for cinema organs he decided to build one into his terraced house in Cheriton, it has to be seen to be believed!

Here's a blast from the past! Who remembers the good old days of the Nailbourne Raft Race? See if there's anyone you know in this cutting from the Kent Herald dated Friday 8th April 1988

Friday, April 8, 1988

Page 43

It's that sinking . . . feeling!



• Don Hanford and Simon Goldfinch from The Duck, Pett Bottom.



• Brian Dickinson of Barham with his "Iceberg" boat.



• Mary Harris of Barham splashes out.



• Chaos reigns on the Nailbourne.



• Left: Chris Hord from Kingston on his "Duck Board".
• Right: Linda Stewart and Jill Skelton from Elham's community centre.

Kings of the river

THE Nailbourne Aquatic Society's rustic equivalent of the Oxford-Cambridge boat race with a bit of Grand National thrown in, was a splash hit on Saturday.

If ever proof was needed that the English nation has finally gone round the bend, it could be found in the Elham Valley at the Nailbourne Rapids fourth "boat race".

Everything about the event is crazy — even the Nailbourne river. It's only supposed to rise every seven years, but was three years early this time.

By Patrick Neale

And then there's the race. Entrants must travel four miles on some sort of seaworthy craft from North Elham Farm to Barham Village Green. There are 20 obstacles en route and several sections, where the vessel has to be carried.

But such is the British passion for all things idiosyncratic, that 12 teams lined up with a range of crafts. Inner tubes, baths, doors, anything that might float was launched. And it was all for a good cause

with sponsorship money going to charities including the Great Ormond Street Hospital, Royal Devon and Exeter Hospital, and the Devon and Exeter Hospice.

Mike Steer, honorary secretary of the Nailbourne Aquatic Circle, marshalled at the race and got a good look at some of the craft.

He said: "Some had obvious design faults. Two had to retire straight away, but the atmosphere was tremendous."

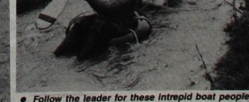
Class winners will receive their cups and trophies at the Barham Fete in July.

Anyone keen to enter the next race, has . . . seven years to design their boat.

Results

1. Team winner — The Great White Whale.
2. Most Original Craft — In-Phase Tandem.
3. Best Junior Original Craft — Richard Williams, Aylesham, and his dug-out canoe.
4. Highest Sponsorship — Shield and cup to be presented to the winner at the Barham Fete in July.

• Chairman of the race committee, Paul George, tests his waterbed.

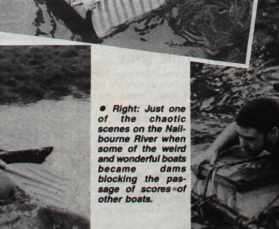


• Follow the leader for these intrepid boat people.

Pictures: Brian Newcombe



• Above: Just Goofy? That's Peter Brundie who finds a stick and a rubber ring the best craft. Below: Sebastian Ayers, eight, of Rhodes Minnis.



• Right: Just one of the chaotic scenes on the Nailbourne River when some of the weird and wonderful boats became dams blocking the passage of scores of other boats.

Remember, all pictures can be ordered from our Folkestone office.

DOVER DESPATCH

FAST EFFICIENT COURIER SERVICE

Anytime — Anywhere
Motorcycle/Car

Documents • Newspaper • Artefacts
Small items of equipment

SPECIAL SERVICE
Dover/London London/Dover
and Essex connection available

DOVER 0304 820612/SOUTHEND 0702 346629

24 Hour Service available Monday-Friday

LEONARDS REST HOME

Reg KCC — Member of Residential Care Homes Assoc.

48/50 LOWER ROAD, RIVER, DOVER

A beautiful home situated in the pleasant village of River. Recently refurbished throughout with vanity units in all rooms.

On call SRN • Colour TV • Lift to all floors • Good food and wine with all main meals — choice of menu • Friendly and caring staff • Long or short stay residents welcome • DHSS and private residents welcome.

CONTACT MATRON ON DOVER 823350

Calling all businessmen in the Deal and Sandwich area. Contact Dawn Higginson for professional and friendly advice regarding advertising in the Deal Express.

Deal & Express
Tel (0304) 240660

2016

Who is Who

Chairman

Derek Boughton

Vice Chairman

Bryan Badham

Secretary

Andree Sladden

Cherry Cottage

New Road

Elham CT4 6TQ

alsladden@btinternet.com

☎ 01303 840336

Treasurer

Dilys Webb

Membership Secretary

Moiria Wiltshire

ehs@elham.co.uk

Communications Co-ordinator

Wendy Badham

ehs@elham.co.uk

Newsletter Editor

Dilys Webb

dilyswebb@btinternet.com

Bygone Kent

The county's history magazine

Under new ownership

Fully illustrated, unique features on Kent
— Britain's most historic county

For fascinating facts and interesting news about
your county in every issue, you need to read



Bygone Kent

**SUBSCRIBE
NOW
ON OUR
WEBSITE**



It's cheaper by subscription: **£26 for six issues**
(or **£15 for our email edition**)

Email: subscriptions@bygonekent.org.uk

Telephone: 07548 197168

www.bygonekent.org.uk

Shaftesbury House, Newton Road, Faversham, Kent ME13 8DZ

*Keep informed about our latest projects and activities -
www.ehs.elham.co.uk and www.ehsdatabase.elham.co.uk*

Postcards

Don't forget our wonderful collection of vintage postcards are available from the Rose and Crown, The Cosy Tea Rooms or Elham Valley Stores, all in the High Street at a cost of 60p each or £4.50 for a pack of nine.



It's your Newsletter!

We've got lots of good "stuff" to tell you about in these newsletters but we hope that you, our members, will also provide contributions.

Everyone will have their own special areas of interest so, to stop us banging on about our own obsessions, send us your thoughts and photos etc. Letters to the Editor are always appreciated!

Please email me: dilyswebb@btinternet.com

Follow us on our Facebook page

We now have our own Facebook group where people (EHS members and non members) can upload pictures and make comments about Elham's history. If you are on Facebook then please take a look at:

www.facebook.com/#!/groups/317708811602063/